

## Corsa Versions – Chunk/Non-Chunk

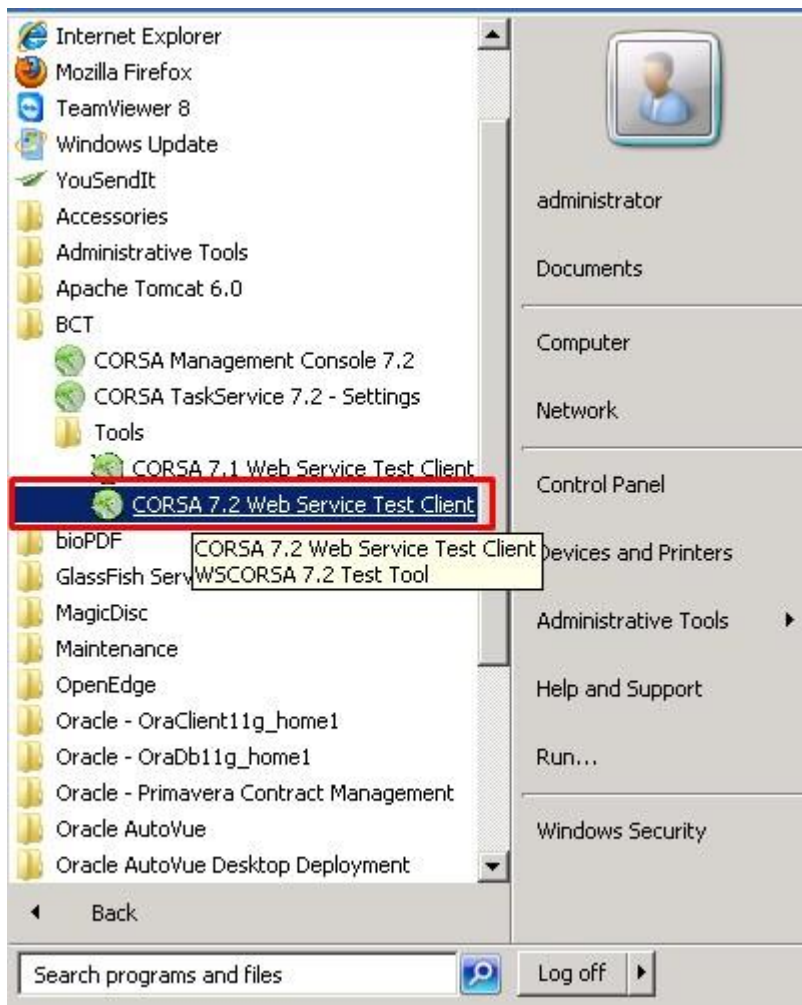
In order to view large files from CORSA, it is necessary to deploy the chunk version of DigEplan. In order to deploy the Chunk version of DigEplan, there is a minimum version of the CORSA Web Services that you will require in order to be able to use the chunk upload/download method.

The minimum version is **7.2.124.1**.

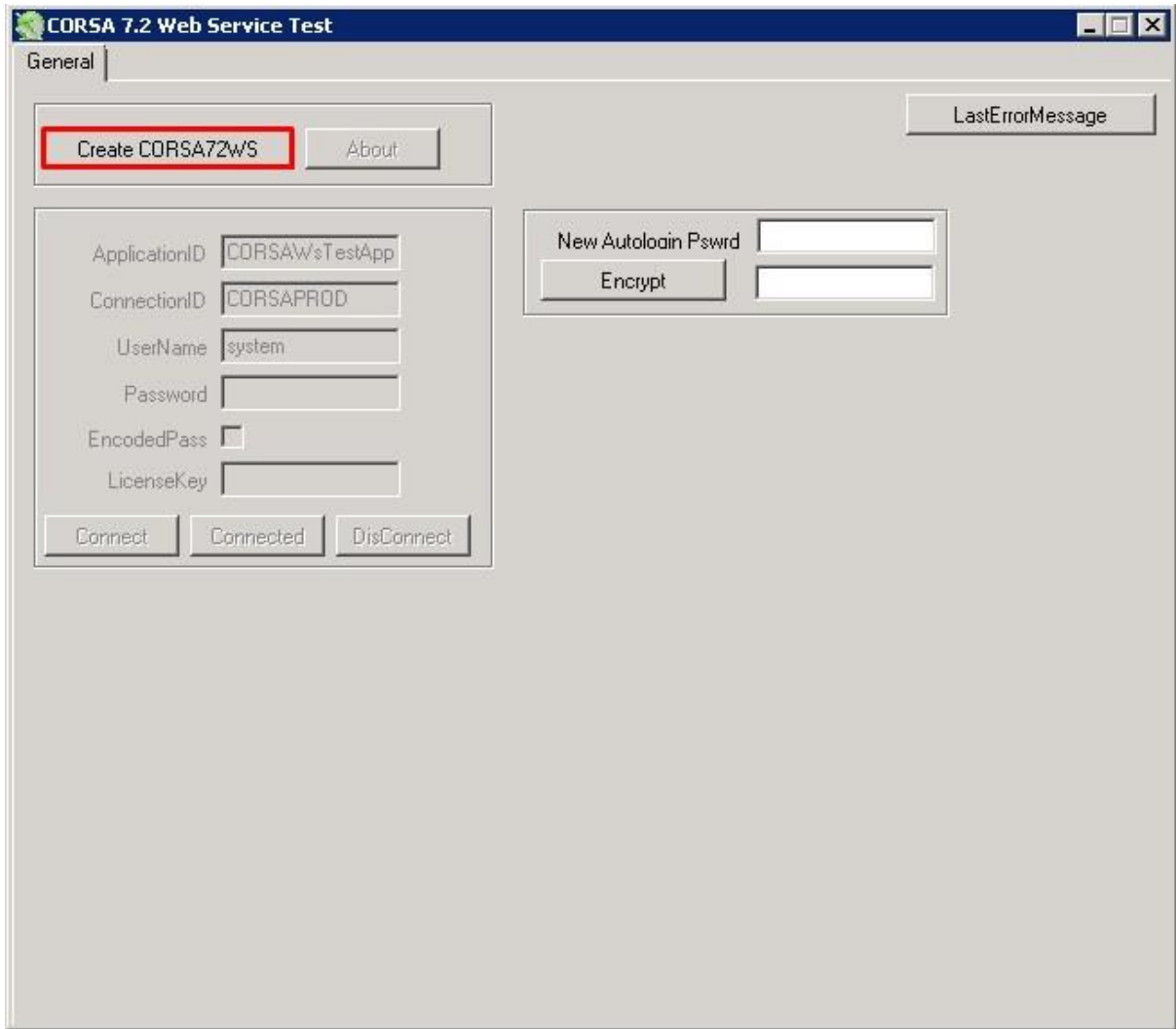
If your CORSA Web services version is below this version and you will need to download/upload large files to/from CORSA, please contact BCT and arrange an upgrade.

Please find below visual instructions on how to perform a Web Service Test, as this is the most efficient way of checking if you can use the Chunk version of DigEplan.

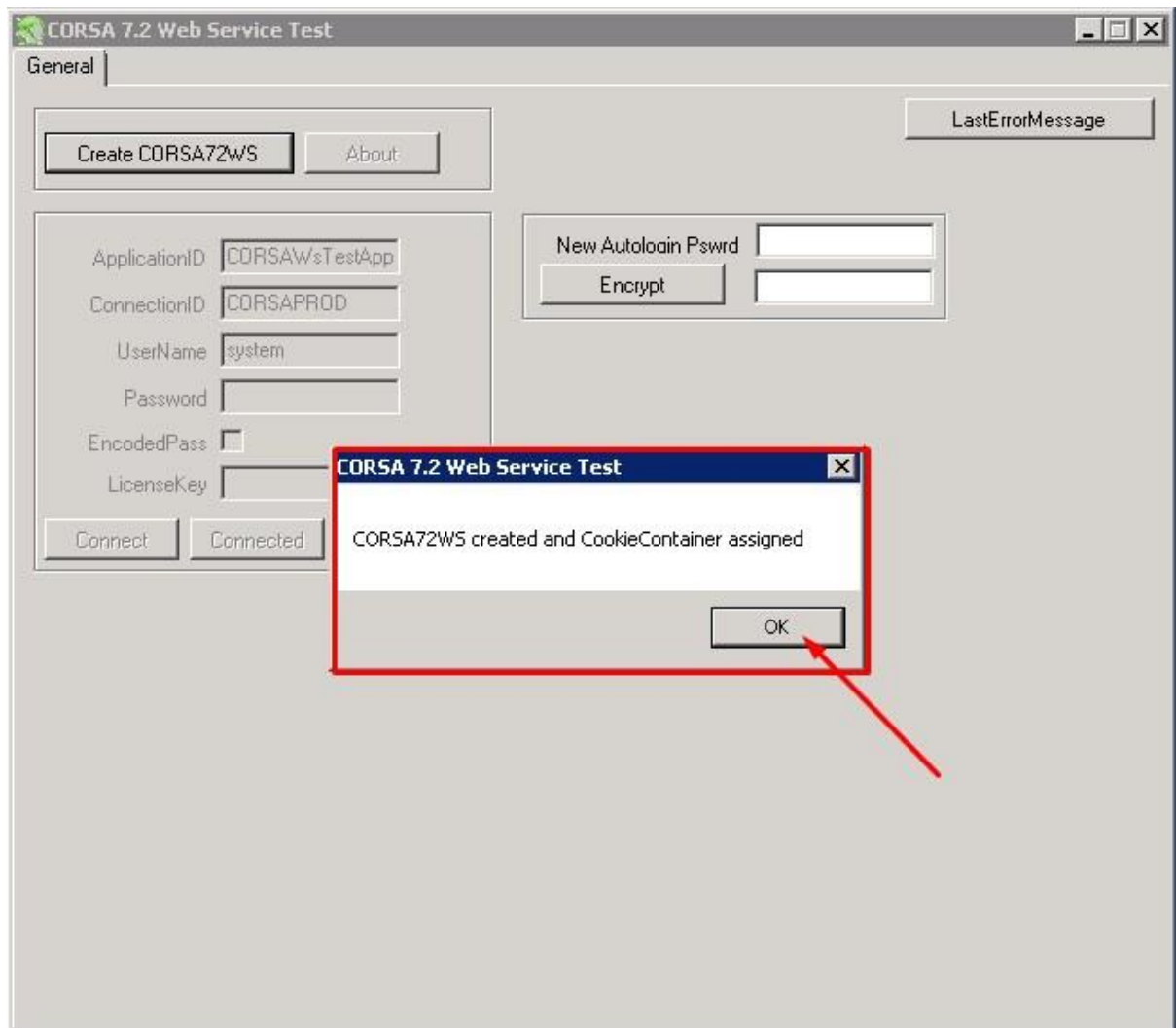
Start by opening the **CORSA 7.2 Web Service Test Client** (Typically found in C:\BCT\Tools).



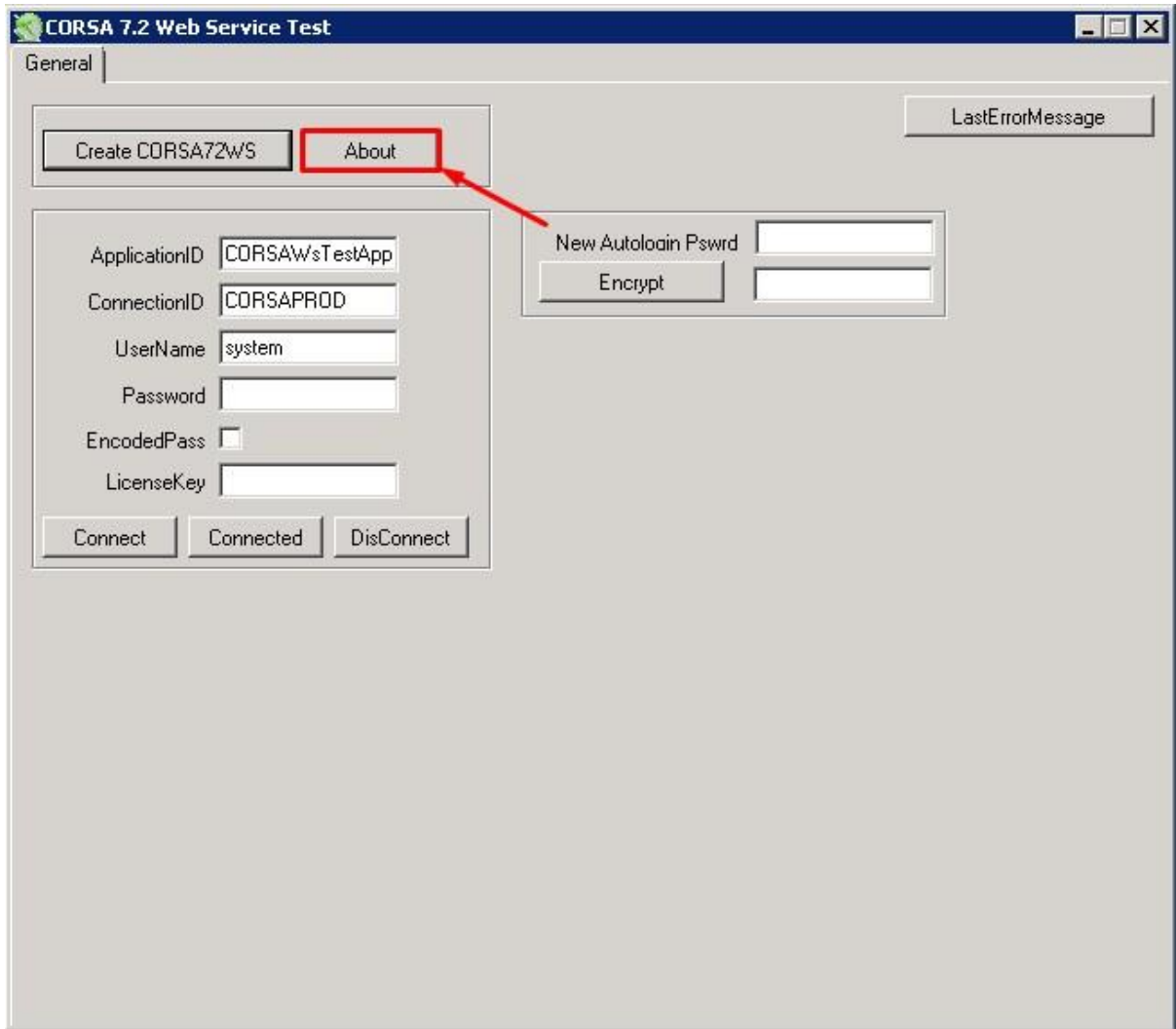
Once you have clicked the Test app, click “Create CORSA72WS” button in the app.



Click okay in the pop-up that confirms that CORSA72WS has been created and a CookieContainer has been assigned.



Now that CORSA72WS has been created, the about button will now be usable. Click it.



This will produce a pop-up with details about the Web Service, including version.

