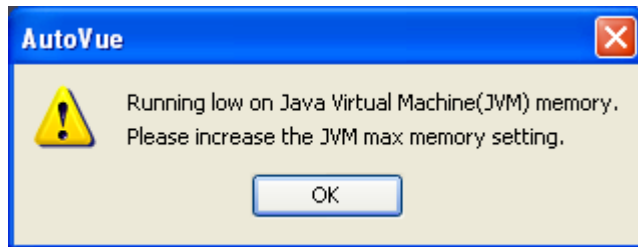


## 8. Client Configuration:

### 8.1. Java Memory:

If using Digital Mockup within the AutoVue solution and the message shown below is displayed when viewing a large assembly, then change the Java JRE client settings as shown below.



Start the Java Control Panel, if using XP or Vista use the Windows menus **Windows -> Start -> Control Panel -> Java** if using Windows 7 or 8 enter **Java Control Panel** into the Windows Search field.

